



***BioEUParks project***  
***A new model of sustainable solid biomass exploitation***



**LEGAMBIENTE**

**Diego Mattioli**

Project Coordinator, Legambiente, Italy

# BioEUParks project

## A new model of sustainable solid biomass exploitation



**Environment and  
nature conservation  
perspective**

# WHO WE ARE



# BioEUParks project

## A new model of sustainable solid biomass exploitation



**Biomass represents 64.2 % of primary renewables production in (Eurostat source, 2013)**

**The solid biomass exploitation must match with the criteria of Sustainable Forest Management and Nature and Biodiversity conservation**

**EU considers the biomass a 'carbon neutral' source of energy basing on the assumption that the carbon released by the combustion of biomass is recaptured during its re-growth**

**Biomass could be considered a sustainable source of energy only under certain conditions**



# ASSUMPTIONS



**LEGAMBIENTE**

# BioEUParks project

## A new model of sustainable solid biomass exploitation



**Increase demand for forest resources risk to impact to the forestry conservation policy**

**Big economic players invested in big scale plants for production of energy from woody-biomass**

**The impact of harvesting, processing, transportation of the woody biomass represent a GHG emission source**

**Big scale plants have environmental and landscape impact and cause social conflicts**



# PROBLEMS



**LEGAMBIENTE**

# BioEUParks project

## A new model of sustainable solid biomass exploitation



**New Model of sustainable solid biomass exploitation matching SFM and Nature e Biodiversity**

**Short Range Sustainable and Responsible Supply Chain < 50 km**

**Small Scale Plants < 1 MW**

**New sustainable local development opportunities**

**Involving of all the local actors in the process obtaining wide social acceptance**



# THE CHALLENGE



**LEGAMBIENTE**

# BioEUParks project

## A new model of sustainable solid biomass exploitation



### PROBLEMS

**Competition of low cost biomass (GR – SI)**

**Structured Market dominated by big players (IT)**

**Low efficiency of electric power production**

**Initial Investment cost (GR –IT)**

**Matching Biomass exploitation and Nature conservation (HU/AT)**

### SOLUTIONS

**To set-up small, local and responsible supply chain on offer side and promote GPP on demand side**

**Parks act as a pioneers to create a new market**

**To concentrate the action on thermal energy production and small thermal plants and domestic biomass boilers**

**To attract Public (ERDF) and Private investments**

**To link protection actions and forest management to identify sustainable source of biomass**

# FINDING SOLUTIONS



**LEGAMBIENTE**



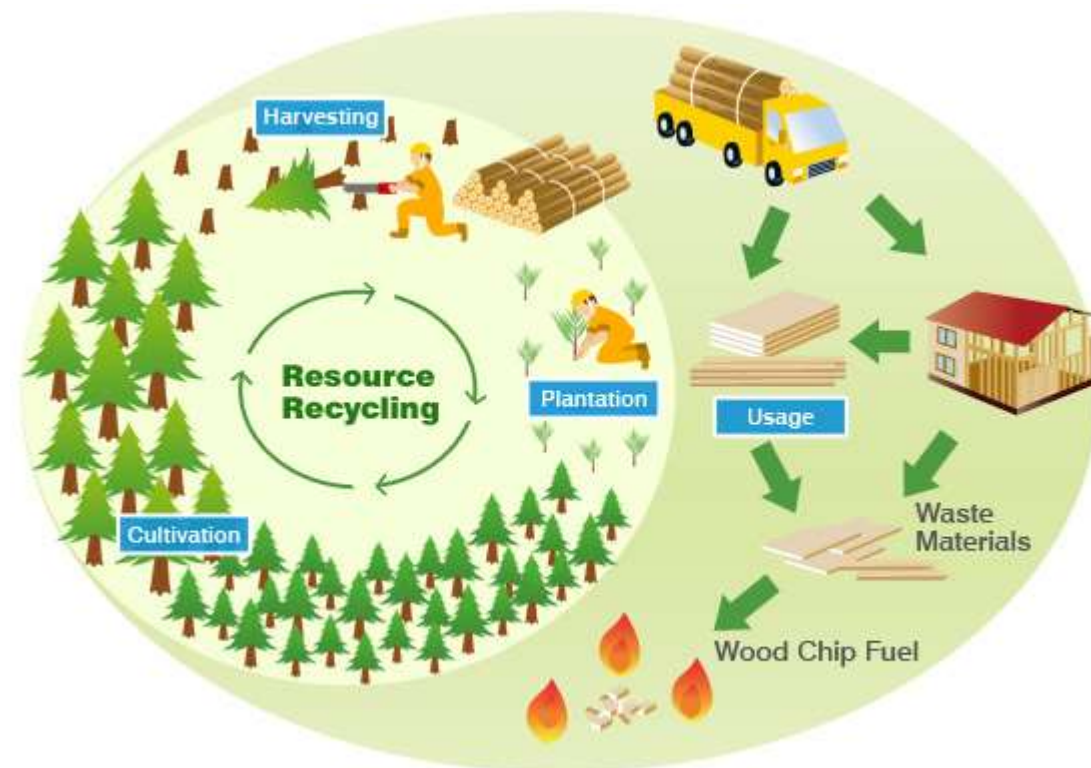
# BioEUParks project

## A new model of sustainable solid biomass exploitation



### Five sustainable supply chain activated based on:

- Thermal energy production
- Short range from harvesting to end users (20-30 km)
- Small plants and domestic boilers (100-250 KW)
- Using of residues and waste material
- Development of local economy
- Shared process with local communities
- Environmental social and economic responsibility



# THE RESULTS



# BioEUParks project

## A new model of sustainable solid biomass exploitation

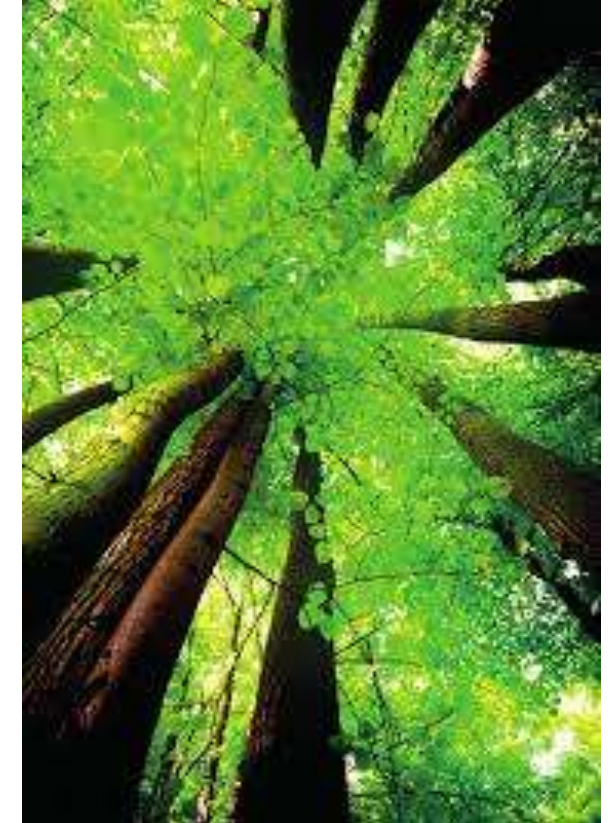


**Activation of a local sustainable development process**

**Creation of steady network among economic actors, civil society and public administrations**

**Designing of a model widely applicable to EU protected area**

**Identification of political input for a new National and EU policy on solid biomass exploitation**



# ACHIEVEMENTS



**LEGAMBIENTE**



# BioEUParks project

## A new model of sustainable solid biomass exploitation



**Parks play a key role in local and EU bio-energy policy**

**The sustainable forestry management and the nature and biodiversity action within protected area represent an important source of biomass**

**The sustainable exploitation of solid biomass could represent a key lever for sustainable economic development of rural and forestall areas**

**The solid biomass exploitation strategy must be based on a participated path with the involvement of all the key territorial actors**

**The local public authority must orient the biomass market towards sustainability adopting Green Public Procurement**



# LESSONS LEARNED



**LEGAMBIENTE**



**Thank you.**



**Diego Mattioli**

Project Coordinator, Legambiente, Italy



Co-funded by the Intelligent Energy Europe  
Programme of the European Union