



PANEL DISCUSSION 2

Models of sustainable biomass supply chain in protected areas



Christos Karachristos, Stavros Kechagioglou

Rodopi National Park, Greece

Spyros Galatsidas, Nikolaos Gounaris

Democritus University, Greece

NAME, LOCATION

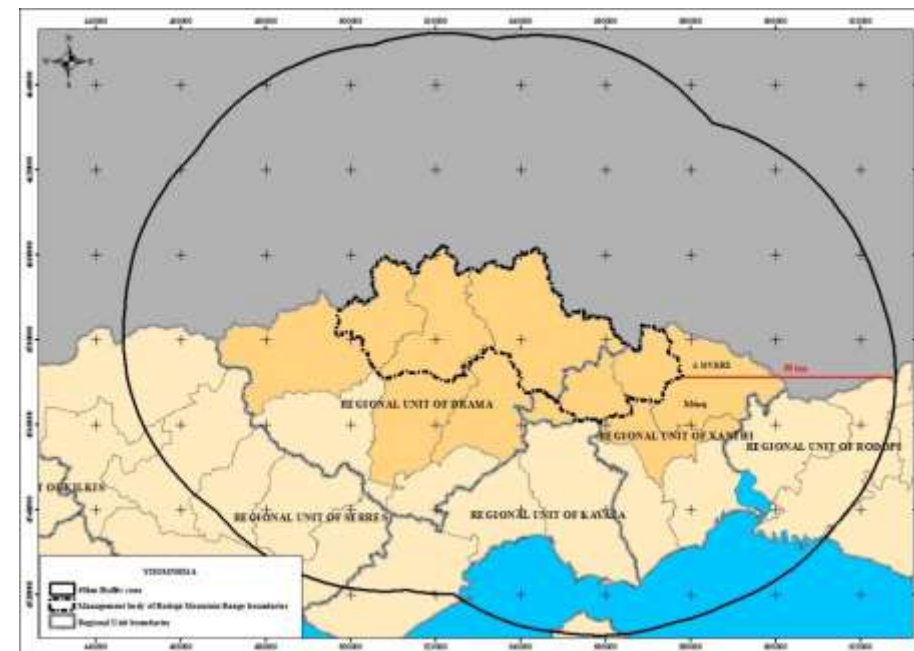
- RODOPI NATIONAL PARK
- North Border, Region of Eastern Macedonia and Thrace
- Established by Joint Ministerial Decision 40379/01-10-2009

CHARACTERISTICS OF THE PARK

- Area: 173.115ha - Forests & Forest areas up to 97,24%
- 5 Municipalities in the park
- 72 active Forest Working Cooperatives

ROLE IN THE PROJECT/main objectives

- Very high Biomass Potential existing in the park
- Increased needs in thermal energy
- Existence of a private company Alfa WOOD (pellet producer) that can exploit local raw material



BACKGROUND INFORMATION



PANEL DISCUSSION 2 *The contribution of Parks to the EU Energy Policy*

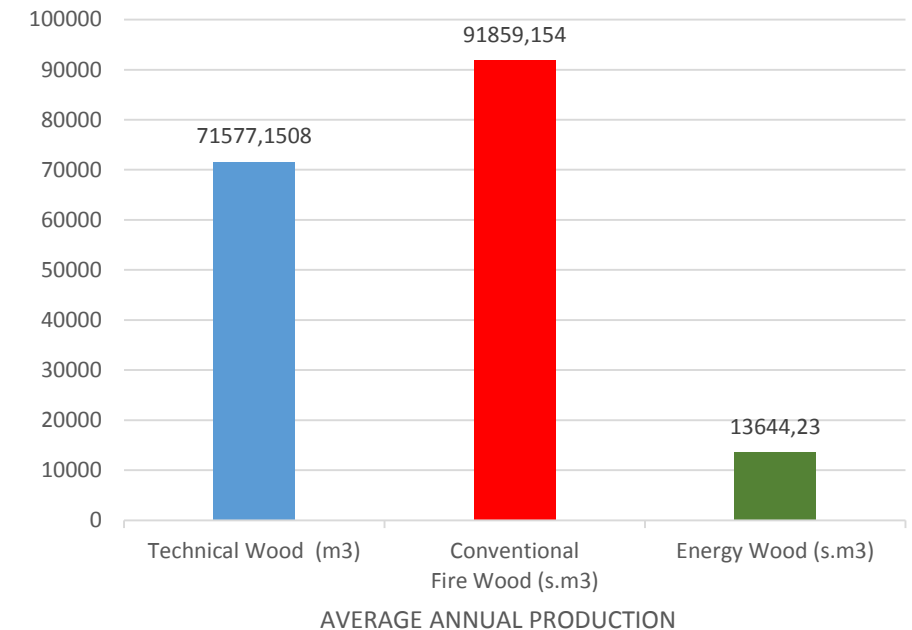


CONTEXT

- **No biomass plant (CHP)** → **Pellet facilities in buildings**
- **Zero Production** → **17,43% of total biomass in 2015**
- **No existing LSC** → **1 LSC in the area of the Park**
- **3 burners (1 municipality)** → **8 burners (2 municipalities)**
- **Imported biomass** → **sustainable produced biomass**
- **Initial hesitation** → **Acceptance of MoU's principals**

CHALLENGES

- **Lack of Knowledge** (no guidelines in biomass exploitation etc.)
- **Cost of burner provision & installation by municipalities**
- **Refueling and maintenance of pellet burners**
- **High fees** in forest compartment exploitation, imposed by the Forest Service
- **Lack of specifications & standards** (pellets, burners etc.)
- **Bottleneck** in biomass flow (energy wood)
- **Cost of local biomass** (in comparison to imported, VAT etc.)



THE CHALLENGE



ROLE OF THE PARK

- *MoUs signed*
- *Set of Contracts signed*
- *Pilot Localized Supply Chain*
- *Monitoring*
- *Fine Tuned LSC*
- *Training*
- *Communication – Dissemination*
- *Permanent running – Long term perspectives*

KEY STAKEHOLDERS INVOLVED

- *Central Forest Service, public/land owner* (General Directorate of Forestry & a. a.-Division of Coordination & Forest inspection)
- *Regional Forest Service, public/land owner/local forest authority* (Drama Directorate of Forestry- Drama Forest Agency)
- *Forest Workers Cooperatives (FWCs), private/wood harvesters*
- *Biomass Processor (Alfa WOOD), private/energy producer*
- *Biomass Merchant, private/energy distributor-retailer*
- *Consumers (municipals), public/end user*

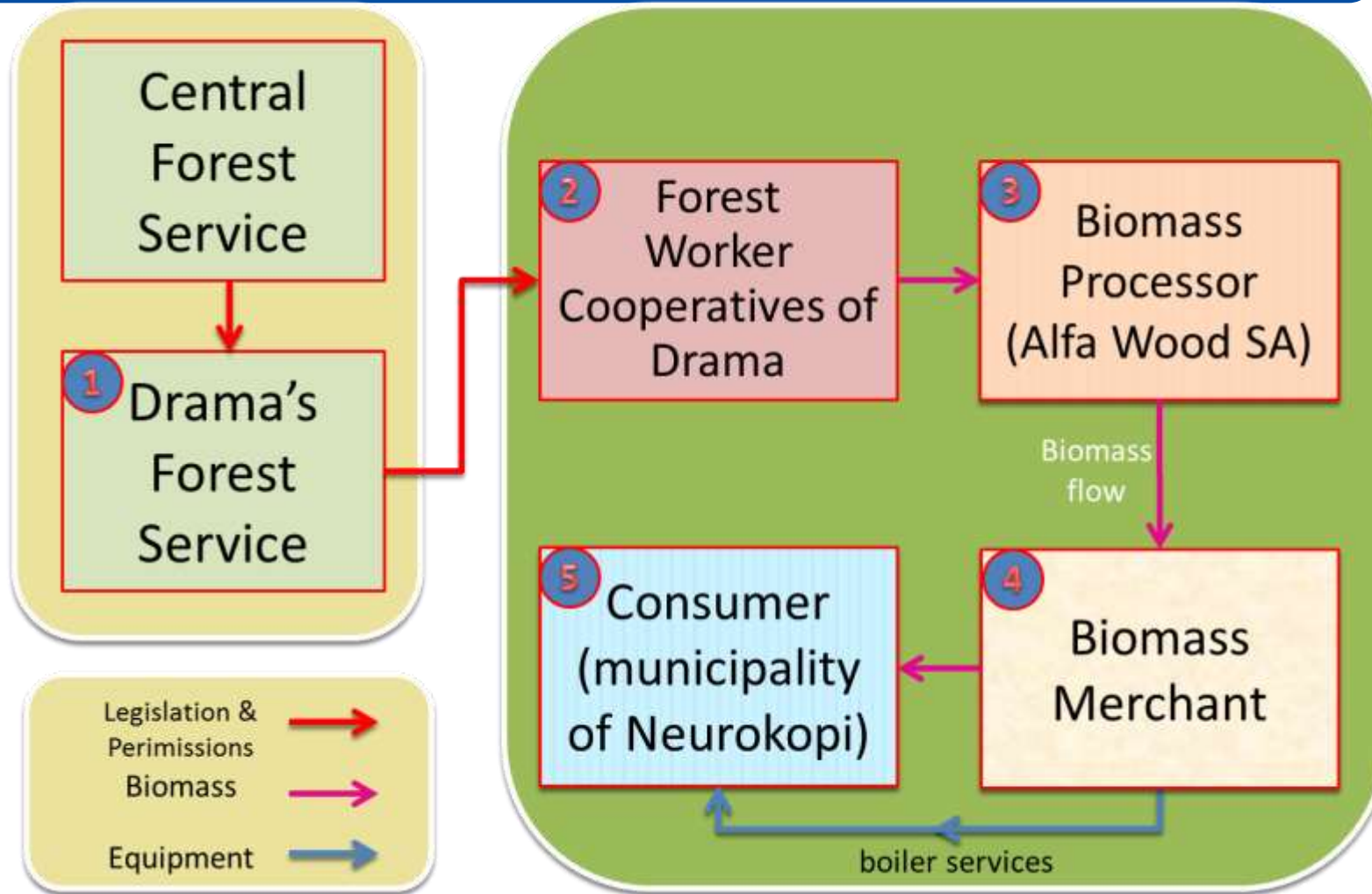
FINDING SOLUTIONS



PANEL DISCUSSION 2 *The contribution of Parks to the EU Energy Policy*



Local
Supply
Chain

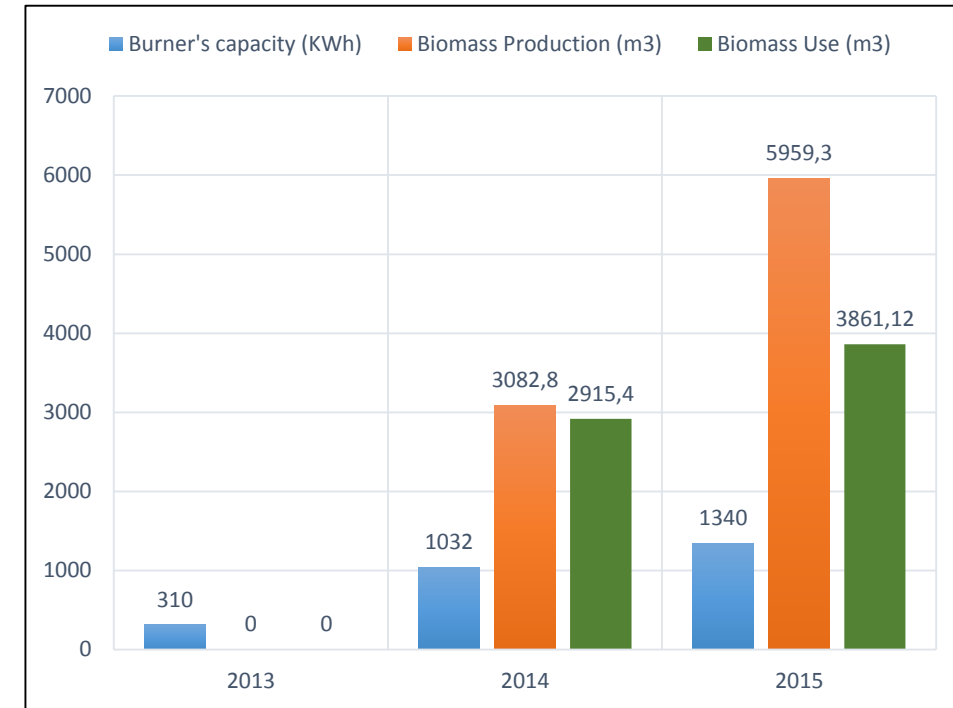


FINDING SOLUTIONS



ACHIEVEMENTS

- *Engaging the key actors of the LSC*
- *Activating/monitoring/expanding the LSC*
- *Overcoming difficulties, solving problems*
- *Raising biomass production for energy purposes*
- *Raising biomass processed for energy purposes*
- *Raising biomass consumption for thermal purposes*
- *Reducing CO₂ emissions and saving energy (Apr. 28%)*
- *Complying with the sustainability criteria*



FINDING SOLUTIONS



*Protected Areas leading new models for local development based on sustainable energy:
a way to contribute to the EU climate and energy targets?*

CONTRIBUTION

- *Renewable sources*
- *Efficient Energy conversion*
- *Lower Emissions*
- *Sustainability of LSC*
- *Socio-economic benefits for the region*

LSC EXPERIENCE/KEYS

- *Identify the End User*
- *Overcome the lack of knowledge*
- *Communication tools (face to face meetings/specific-ad hoc)*
- *Make it economically profitable/sustainable (find solutions)*
- *Comply with laws/specifications to ensure environmental sustainability*

LESSONS LEARNED





Thank you.



Christos Karachristos, Stavros Kechagioglou

Rodopi National Park, Greece



Spyros Galatsidas, Nikolaos Gounaris

Democritus University, Greece



Co-funded by the Intelligent Energy Europe
Programme of the European Union